



PROINSO PV RACK HANGER BOLT

PROINSO

2.7 GW
PROJECTS SUPPLIED

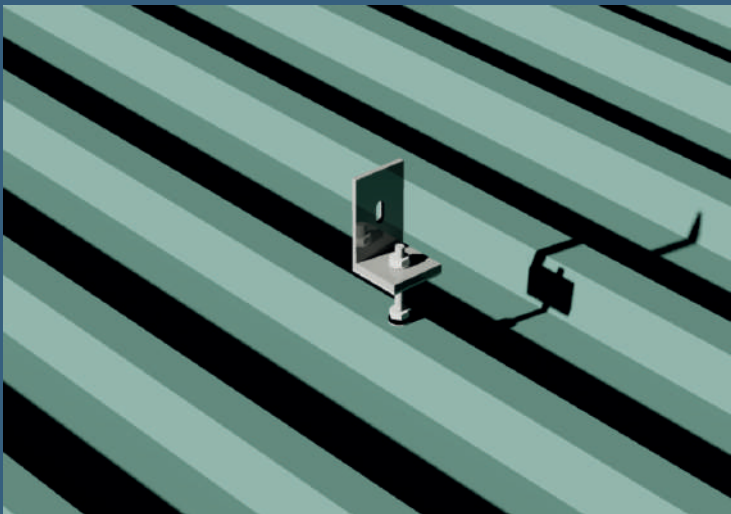
10+ YEARS
EXPERIENCE IN SOLAR

20+ OFFICES
ACROSS 5 CONTINENTS

3 DIVISIONS
DISTRIBUTION & INTEGRATION,
TECHNOLOGY,
EPM

2,500
QUALIFIED INSTALLERS

PROINSO PV Rack is one of the simplest rooftop structures to assemble on the PV market. It adds exceptional value to both commercial and residential projects by offering versatility and usability. PROINSO PV Rack also reduces the risk to the installer, assisting in the successful implementation of PV projects.



The versatility of the roof systems from the PROINSO PV RACK allows an easy adaptation to most locations, complying with the applicable regulations in each area of installation. Roof systems from PROINSO PV RACK allow a quick assembly.



EASY TO INSTALL

PROINSO PV Rack is one of the simplest rooftop structures to assemble, on the PV market.



COMPACT PACKAGING

As part of PROINSO PV Rack solutions, all the items are packaged as a kit coming in a compact, 1kW size box, lowering you transportation and storage costs.



ROBUST & HIGH QUALITY

PROINSO PV RACK rooftop PV structures are made of hollowed aluminum profiles bolted together, with enough ability to support photovoltaic modules with standard commercial dimensions.

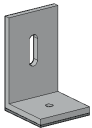


TECHNICAL SPECIFICATIONS

APPLICATION	Pitched roof – on-roof
ROOFING	Trapezoidal and sinusoidal metal sheet, asbestos
MIN. SHEET THICKNESS	Steel: 0.5mm / Aluminium: 0.8mm
MIN. BEAD HEIGHT	From 20mm
ROOF SLOPE	Up to 20°
PURLIN THICKNESS	2mm minimum
FIXATION WITH ROOF	Hanger Bolt with L connector
BUILDING HEIGHT	Up to 20m
PV-MODULES	Framed, frameless
MODULE ORIENTATION	Landscape (portrait according to purlin to purlin distance)
SIZE OF MODULE ARRAY	Any size possible
POSSIBLE HEIGHT COMPENSATION	Up to 10mm
DISTANCE BETWEEN RAIL FIXATIONS	Depending on load situation (automatic verification per design software)
STANDARDS	Eurocode 1 – Action on structures Eurocode 9 – Design of aluminium structures
SUPPORTING PROFILES	Extruded aluminium profiles (EN AW 6063 T6)
RAIL FIXATIONS	Side fixing clip: Aluminium (EN AW 6063 T6)
SMALL PARTS	Stainless steel (V2A)
COLOUR	Aluminium: plate finish



EACH 1KW BOX CONTAINS THESE ELEMENTS



L-connector



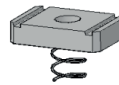
Hanger Bolt



Mid Clamp



End Clamp



Spring Nut



Splice Plate



Fasteners

PROINSO HQ

943 Yeovil Road
SL1 4NH Slough
UNITED KINGDOM
info@proinso.net
+44 (0) 17 5353 8448

PROINSO SOUTH AFRICA

7th Floor, Mandela Rhodes Place,
Cnr of Wale and Burg Street,
Cape Town, 8000,
South Africa
southafrica@proinso.net
+(27) 021 410 8908

PROINSO AMERICAS

1030 Riverside PKWY Suite 130
West Sacramento
CA 95605, United States
usa@proinso.net
(+1) 916 374 8722

PROINSO EAST ASIA

15th Floor, 100 Queen's Road
Center Central, Hong Kong
china@proinso.net
+852 3960 6363

PROINSO SOUTH ASIA

2-22 Evergreen Industrial
Estate Shakti Mill Lane
Mahalaxmi
400011 Mumbai, India
india@proinso.net
(+91) 022 4004 2286