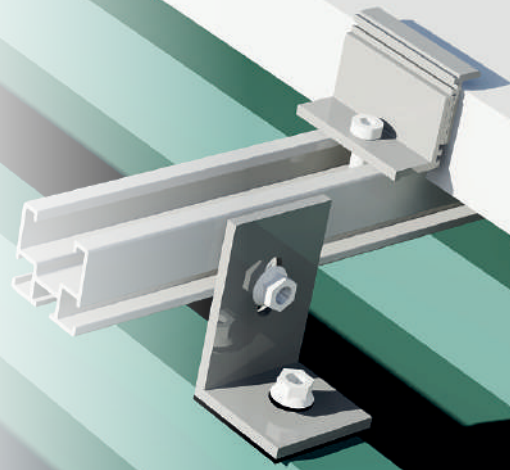




# PROINSO PV RACK IBR ROOF



## PROINSO

**2.7 GW**  
PROJECTS SUPPLIED

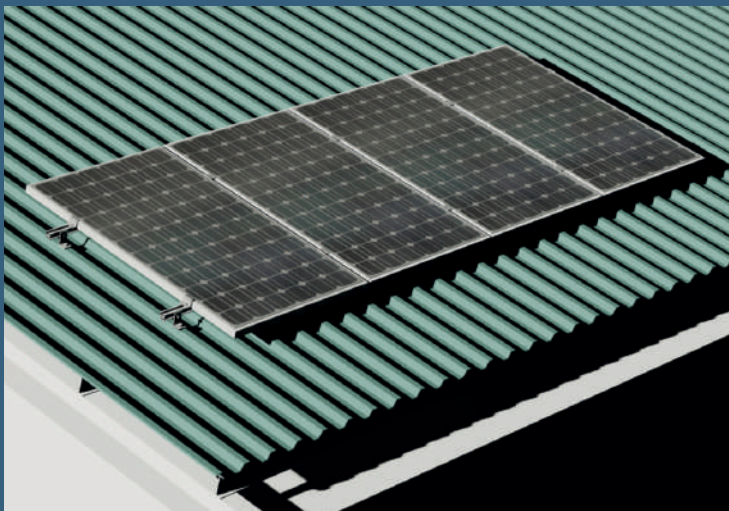
**10+ YEARS**  
EXPERIENCE IN SOLAR

**20+ OFFICES**  
ACROSS 5 CONTINENTS

**3 DIVISIONS**  
DISTRIBUTION & INTEGRATION,  
TECHNOLOGY,  
EPM

**2,500**  
QUALIFIED INSTALLERS

PROINSO PV Rack is one of the simplest rooftop structures to assemble on the PV market. It adds exceptional value to both commercial and residential projects by offering versatility and usability. PROINSO PV Rack also reduces the risk to the installer, assisting in the successful implementation of PV projects.



The versatility of the roof systems from the PROINSO PV RACK allows an easy adaptation to most locations, complying with the applicable regulations in each area of installation. Roof systems from PROINSO PV RACK allow a quick assembly.



### EASY TO INSTALL

PROINSO PV Rack is one of the simplest rooftop structures to assemble, on the PV market.



### COMPACT PACKAGING

As part of PROINSO PV Rack solutions, all the items are packaged as a kit coming in a compact, 1kW size box, lowering your transportation and storage costs.



### ROBUST & HIGH QUALITY

PROINSO PV RACK rooftop PV structures are made of hollowed aluminum profiles bolted together, with enough ability to support photovoltaic modules with standard commercial dimensions.

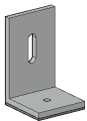


## TECHNICAL SPECIFICATIONS

<b>APPLICATION</b>	Pitched roof – on-roof
<b>ROOFING</b>	Trapezoidal metal sheet
<b>MIN. SHEET THICKNESS</b>	Steel: 0.5mm / Aluminium: 0.8mm
<b>MIN. BEAD HEIGHT</b>	From 20mm
<b>ROOF SLOPE</b>	Up to 20°
<b>PURLIN THICKNESS</b>	2mm minimum
<b>FIXATION WITH ROOF</b>	Self-tapping screws with L connector
<b>BUILDING HEIGHT</b>	Up to 20m
<b>PV-MODULES</b>	Framed, frameless
<b>MODULE ORIENTATION</b>	Portrait, Landscape
<b>SIZE OF MODULE ARRAY</b>	Any size possible
<b>POSSIBLE HEIGHT COMPENSATION</b>	Up to 11mm
<b>DISTANCE BETWEEN RAIL FIXATIONS</b>	Depending on load situation (automatic verification per design software)
<b>STANDARDS</b>	Eurocode 1 – Action on structures Eurocode 9 – Design of aluminium structures
<b>SUPPORTING PROFILES</b>	Extruded aluminium profiles (EN AW 6063 T6)
<b>RAIL FIXATIONS</b>	Side fixing clip: Aluminium (EN AW 6063 T6)
<b>SMALL PARTS</b>	Stainless steel (V2A)
<b>COLOUR</b>	Aluminium: plate finish



## EACH 1KW BOX CONTAINS THESE ELEMENTS



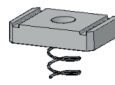
L-connector



Mid Clamp



End Clamp



Spring Nut



Splice Plate



Self Screw



Fasteners

### PROINSO HQ

943 Yeovil Road  
SL1 4NH Slough  
UNITED KINGDOM  
info@proinso.net  
+44 (0) 17 5353 8448

### PROINSO SOUTH AFRICA

7th Floor, Mandela Rhodes Place,  
Cnr of Wale and Burg Street,  
Cape Town, 8000,  
South Africa  
southafrica@proinso.net  
+(27) 021 410 8908

### PROINSO AMERICAS

1030 Riverside PKWY Suite 130  
West Sacramento  
CA 95605, United States  
usa@proinso.net  
(+1) 916 374 8722

### PROINSO EAST ASIA

15th Floor, 100 Queen's Road  
Center Central, Hong Kong  
china@proinso.net  
+852 3960 6363

### PROINSO SOUTH ASIA

2-22 Evergreen Industrial  
Estate Shakti Mill Lane  
Mahalaxmi  
400011 Mumbai, India  
india@proinso.net  
(+91) 022 4004 2286