



PROINSO PV RACK TILE

PROINSO

2.7 GW
PROJECTS SUPPLIED

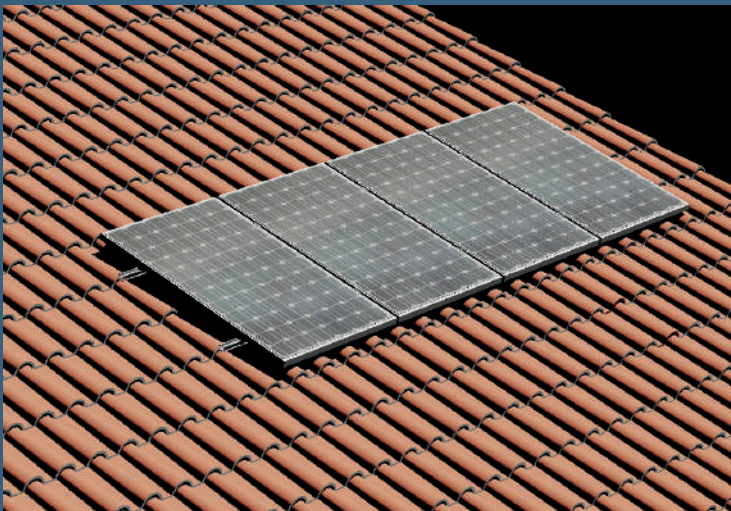
10+ YEARS
EXPERIENCE IN SOLAR

20+ OFFICES
ACROSS 5 CONTINENTS

3 DIVISIONS
DISTRIBUTION & INTEGRATION,
TECHNOLOGY,
EPM

2,500
QUALIFIED INSTALLERS

PROINSO PV Rack is one of the simplest rooftop structures to assemble on the PV market. It adds exceptional value to both commercial and residential projects by offering versatility and usability. PROINSO PV Rack also reduces the risk to the installer, assisting in the successful implementation of PV projects.



The versatility of the roof systems from the PROINSO PV RACK allows an easy adaptation to most locations, complying with the applicable regulations in each area of installation. Roof systems from PROINSO PV RACK allow a quick assembly.



EASY TO INSTALL

PROINSO PV Rack is one of the simplest rooftop structures to assemble, on the PV market.



COMPACT PACKAGING

As part of PROINSO PV Rack solutions, all the items are packaged as a kit coming in a compact, 1kW size box, lowering you transportation and storage costs.



ROBUST & HIGH QUALITY

PROINSO PV RACK rooftop PV structures are made of hollowed aluminum profiles bolted together, with enough ability to support photovoltaic modules with standard commercial dimensions.

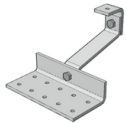


TECHNICAL SPECIFICATIONS



APPLICATION	Pitched roof – on-roof
ROOFING	Suitable for most types of roof cladding
ROOF SLOPE	Up to 60°
BUILDING HEIGHT	Up to 20m
PV-MODULES	Framed, frameless
MODULE ORIENTATION	Portrait and landscape
SIZE OF MODULE ARRAY	Any size possible
POSITION OF THE MODULE ARRAY	No special requirements
DISTANCE BETWEEN ROOF FIXING POINTS	Up to 2m
MAXIMUM MODULES CANTILEVER	1/3 of roof attachment spacing or module installation guide
RAIL LAYOUT	Shared rail or traditional rail layouts
STANDARDS	Eurocode 1 – Action on structures Eurocode 9 – Design of aluminium structures
SUPPORTING PROFILES	Extruded aluminium profiles (EN AW 6063 T6)
RAIL FIXATIONS	Side fixing clip: Aluminium (EN AW 6063 T6)
HOOKS, SMALL PARTS	Stainless steel (V2A)
COLOUR	Aluminium: plate finish; on request; Visible components available in black

EACH 1KW BOX CONTAINS THESE ELEMENTS



Connector



Mid Clamp



End Clamp



Spring Nut



Splice Plate



Self Screw



Fasteners

PROINSO HQ

943 Yeovil Road
SL1 4NH Slough
UNITED KINGDOM
info@proinso.net
+44 (0) 17 5353 8448

PROINSO SOUTH AFRICA

7th Floor, Mandela Rhodes Place,
Cnr of Wale and Burg Street,
Cape Town, 8000,
South Africa
southafrica@proinso.net
+(27) 021 410 8908

PROINSO AMERICAS

1030 Riverside PKWY Suite 130
West Sacramento
CA 95605, United States
usa@proinso.net
(+1) 916 374 8722

PROINSO EAST ASIA

15th Floor, 100 Queen's Road
Center Central, Hong Kong
china@proinso.net
+852 3960 6363

PROINSO SOUTH ASIA

2-22 Evergreen Industrial
Estate Shakti Mill Lane
Mahalaxmi
400011 Mumbai, India
india@proinso.net
(+91) 022 4004 2286